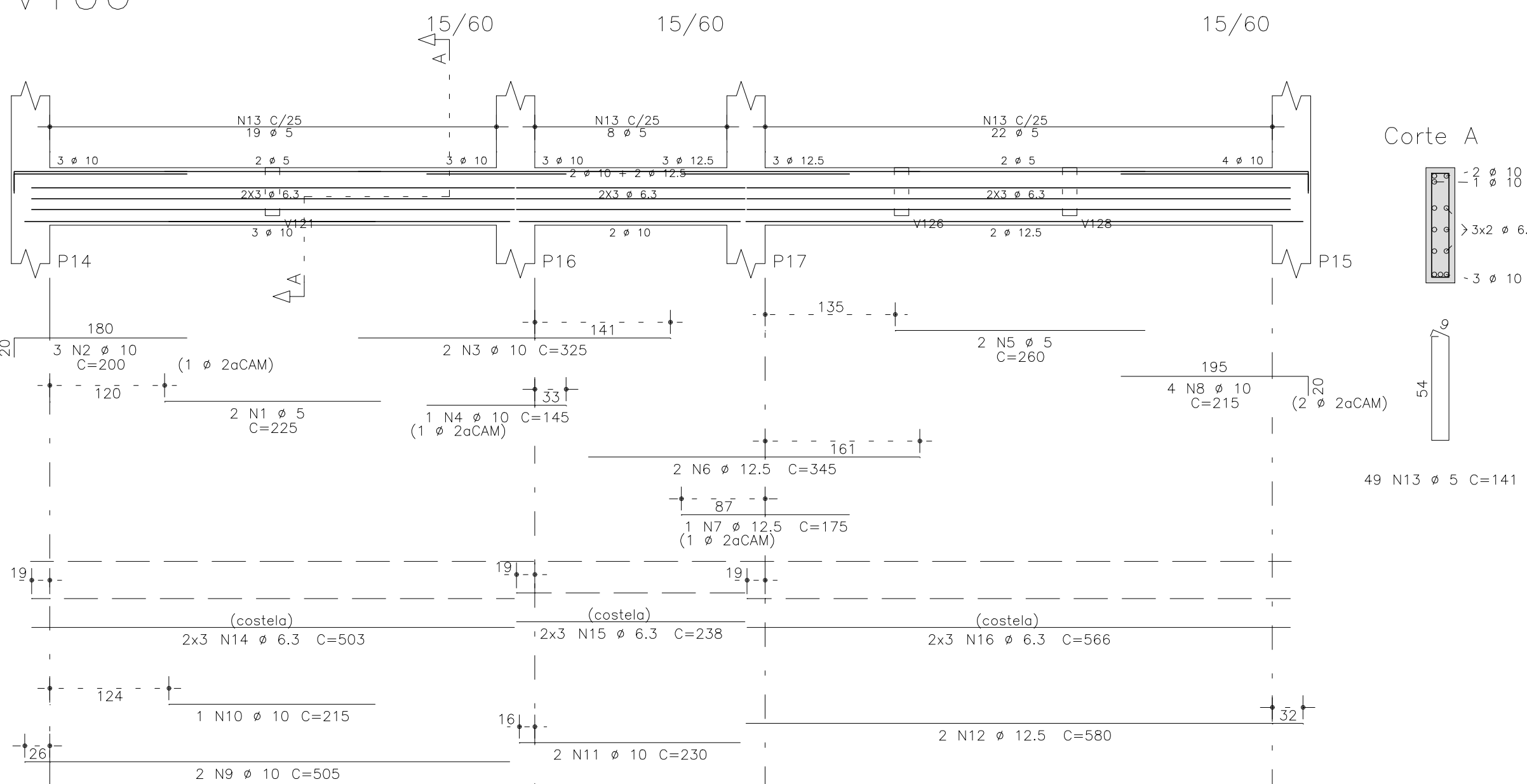
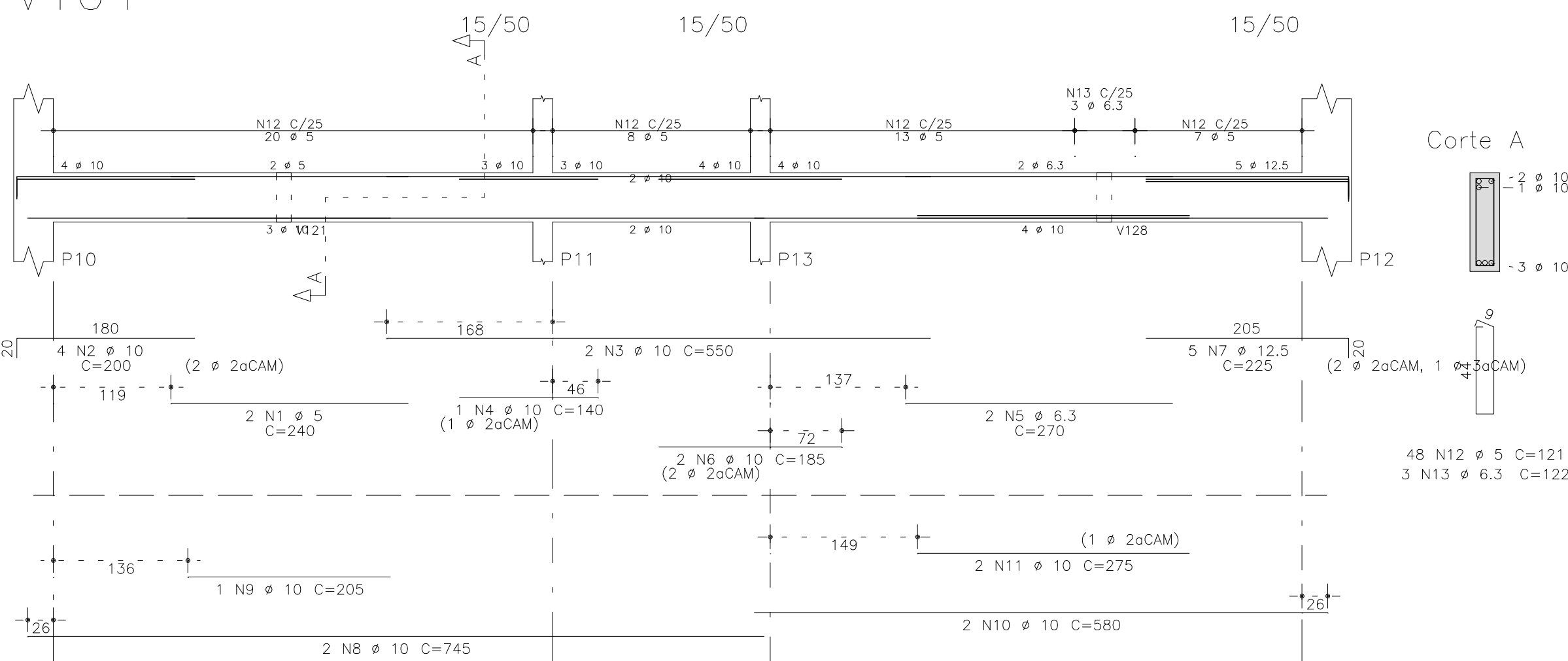


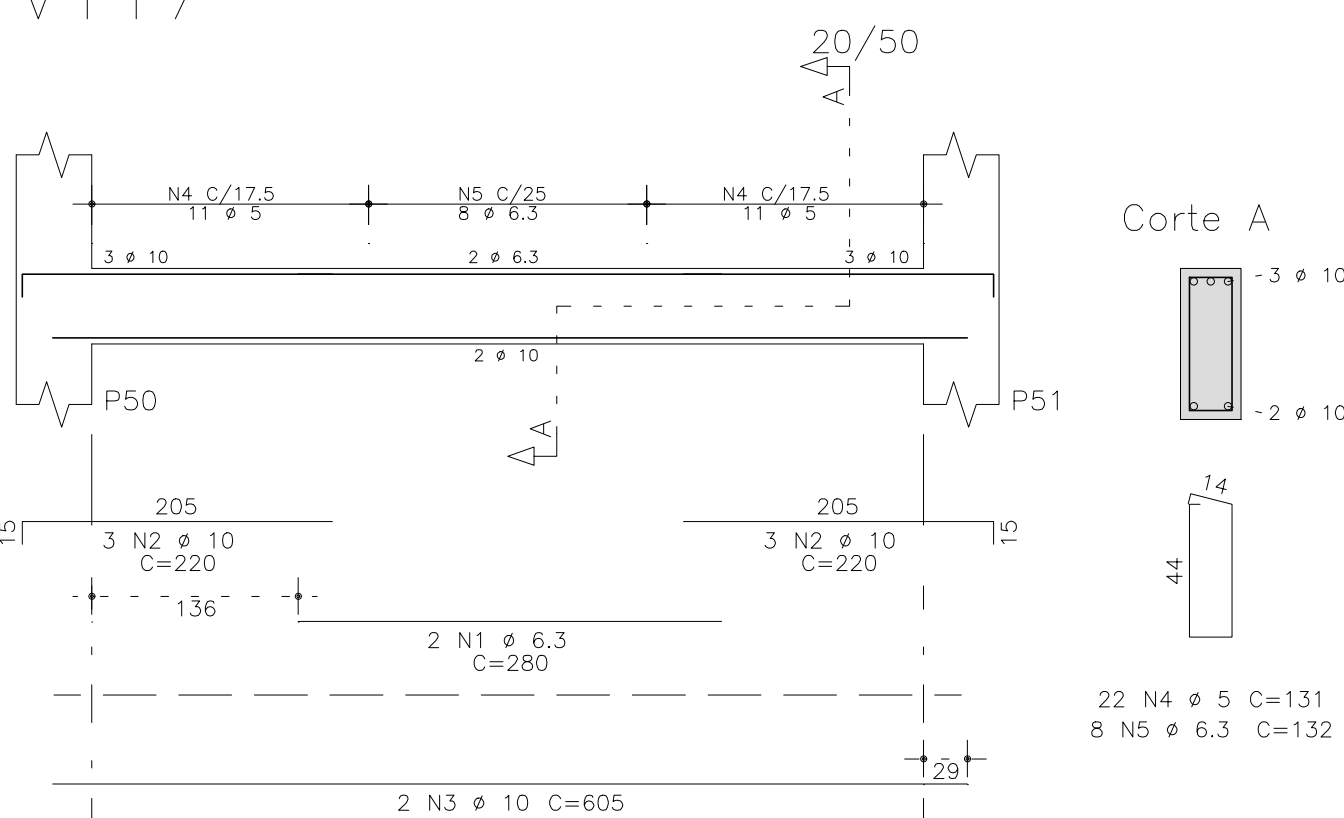
V106



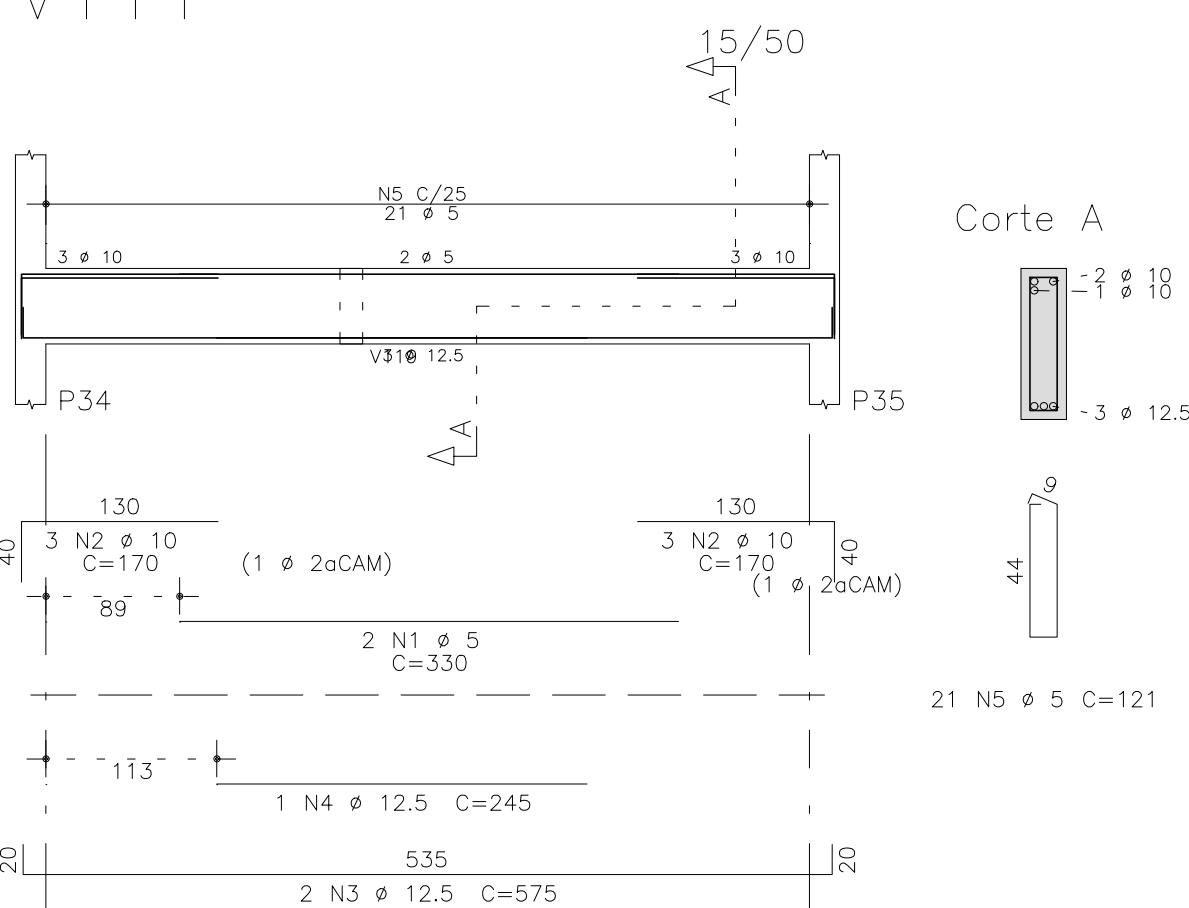
V104



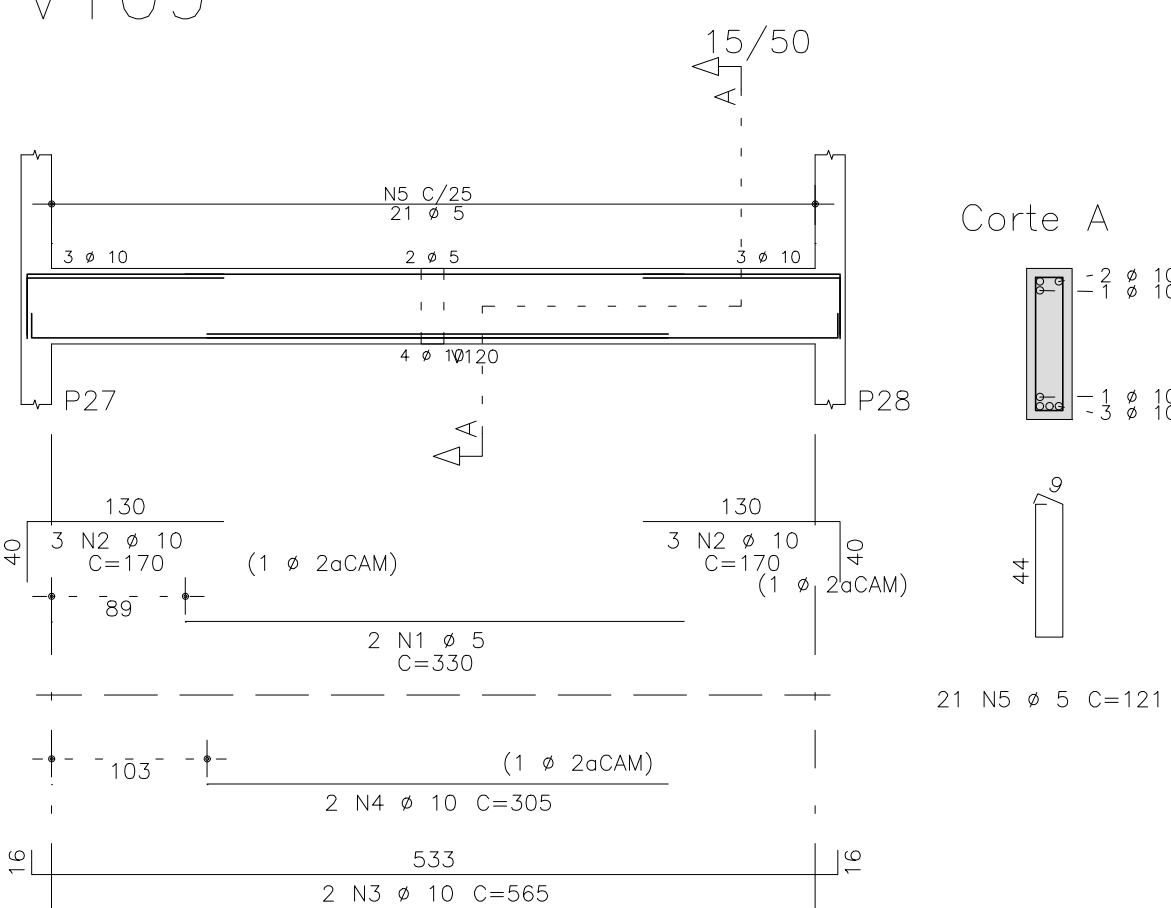
V117



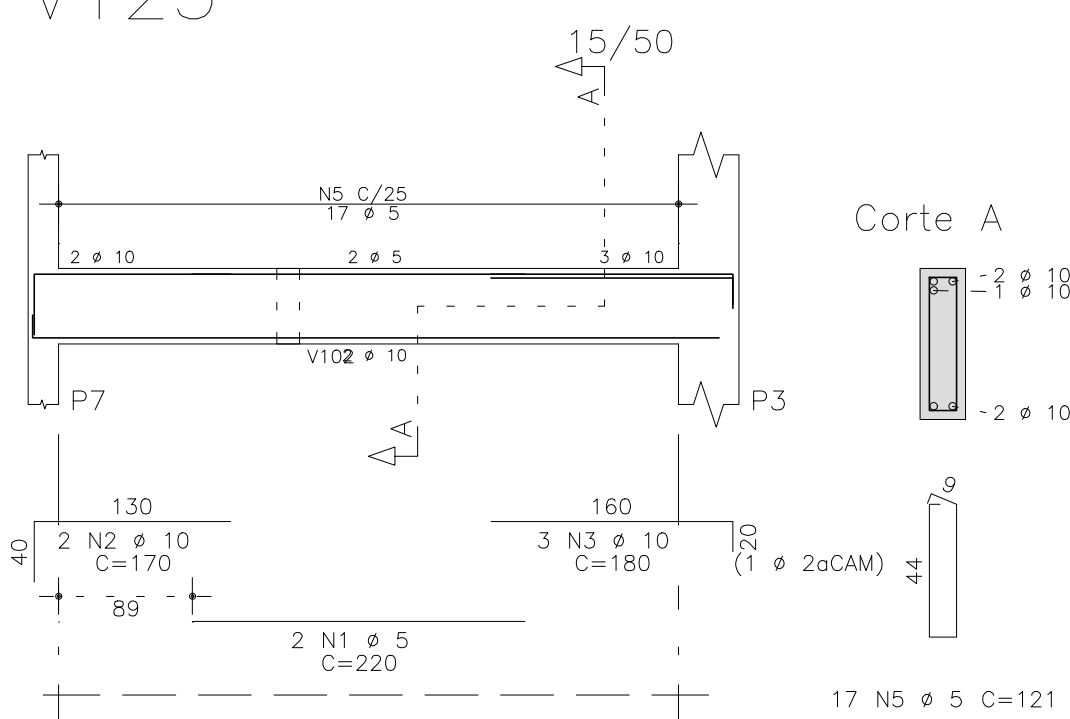
V111



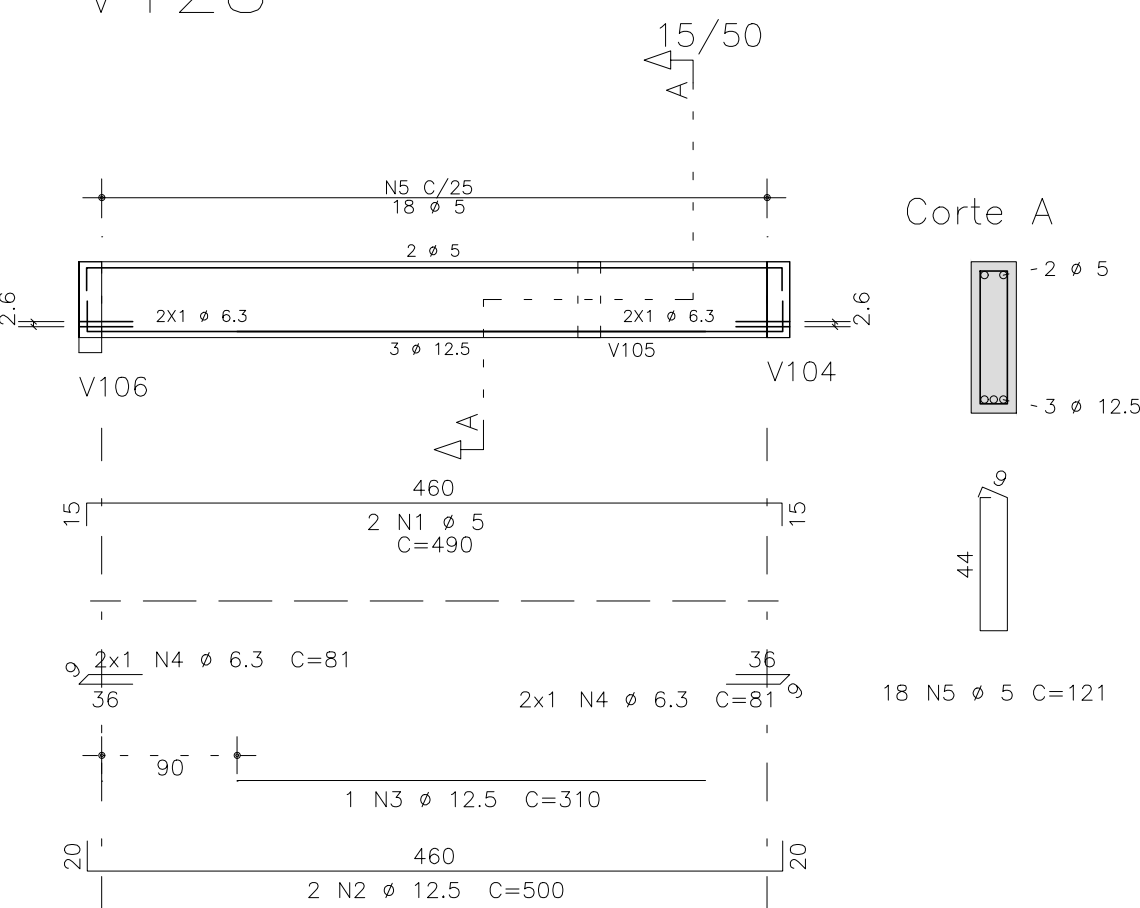
V109



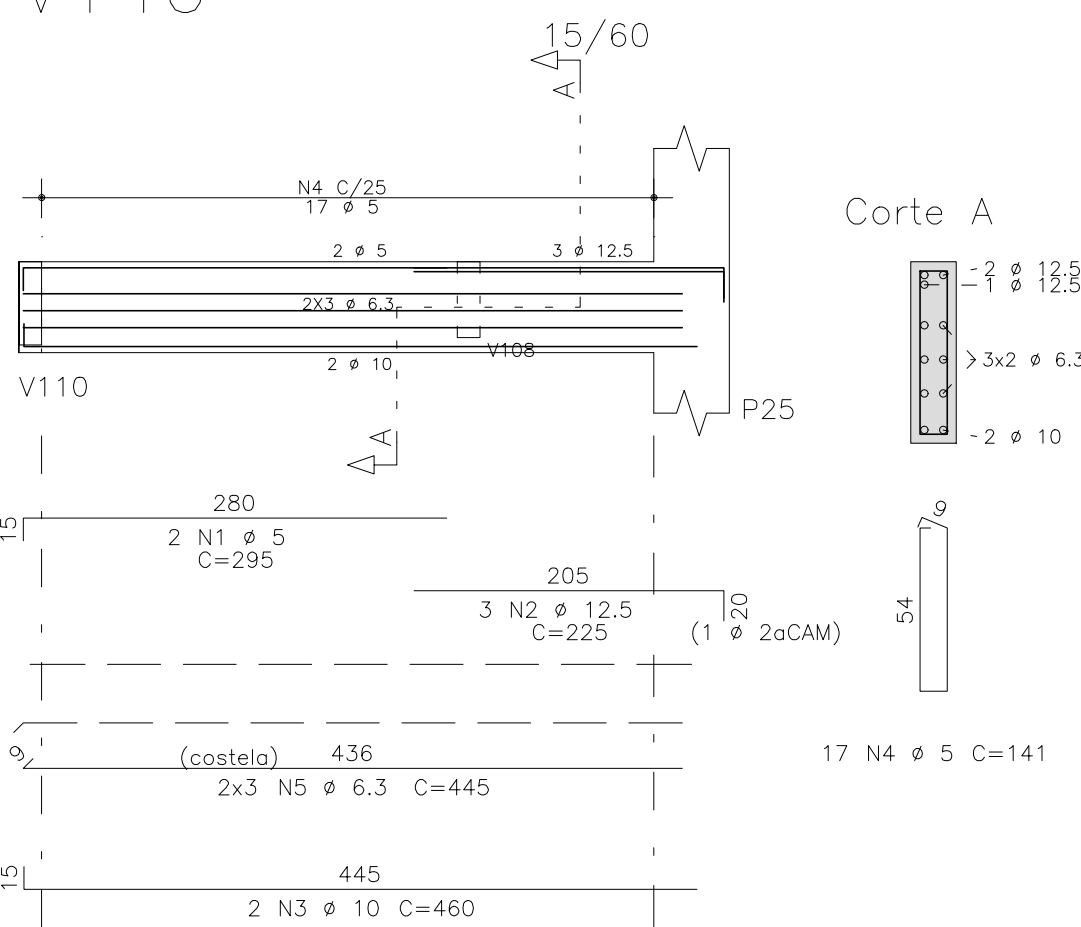
V123



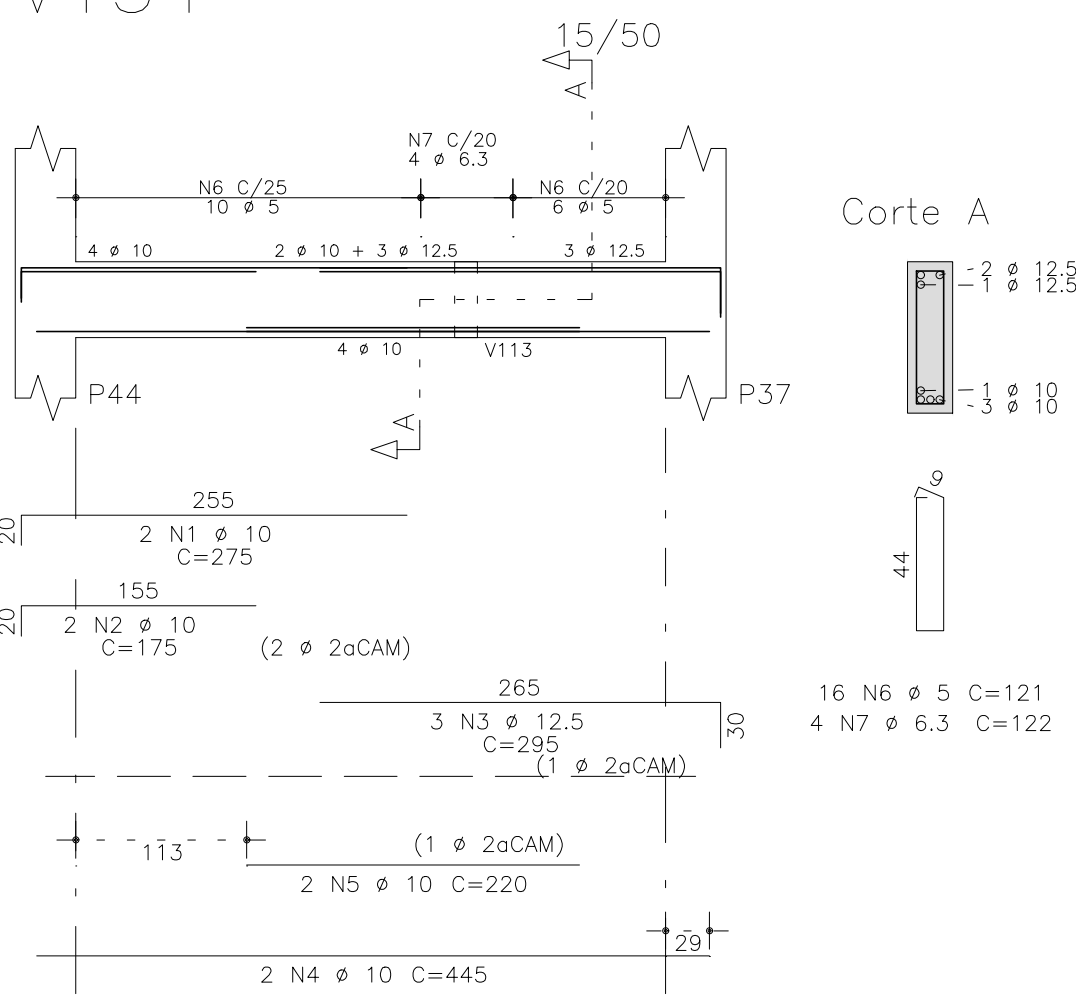
V128



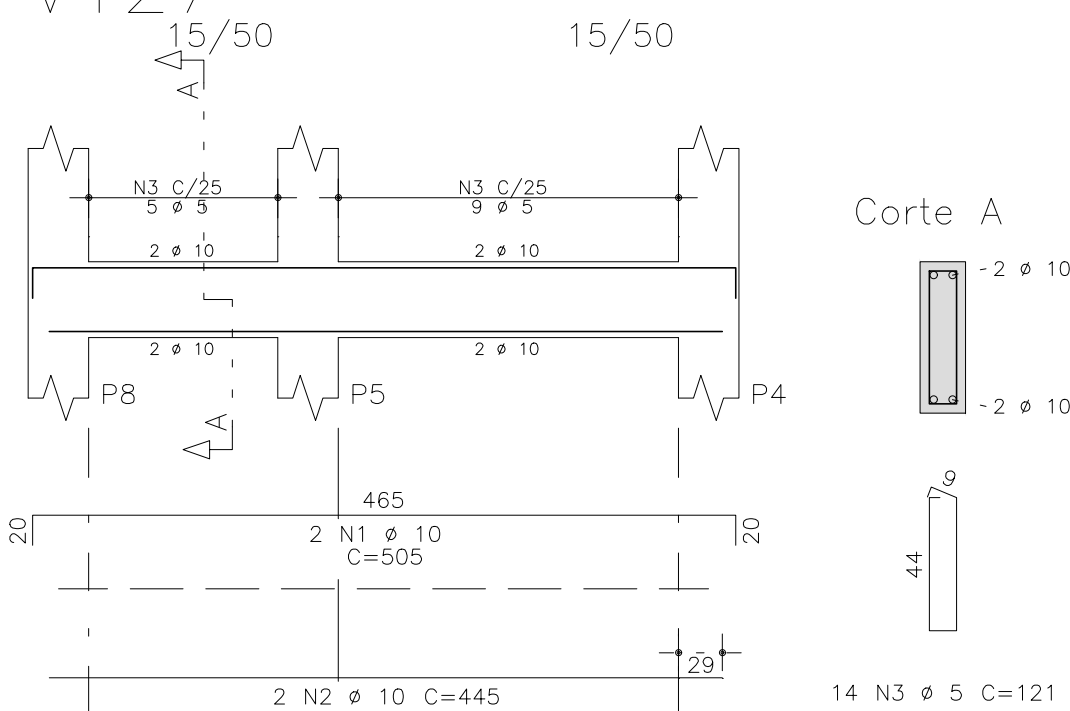
V140



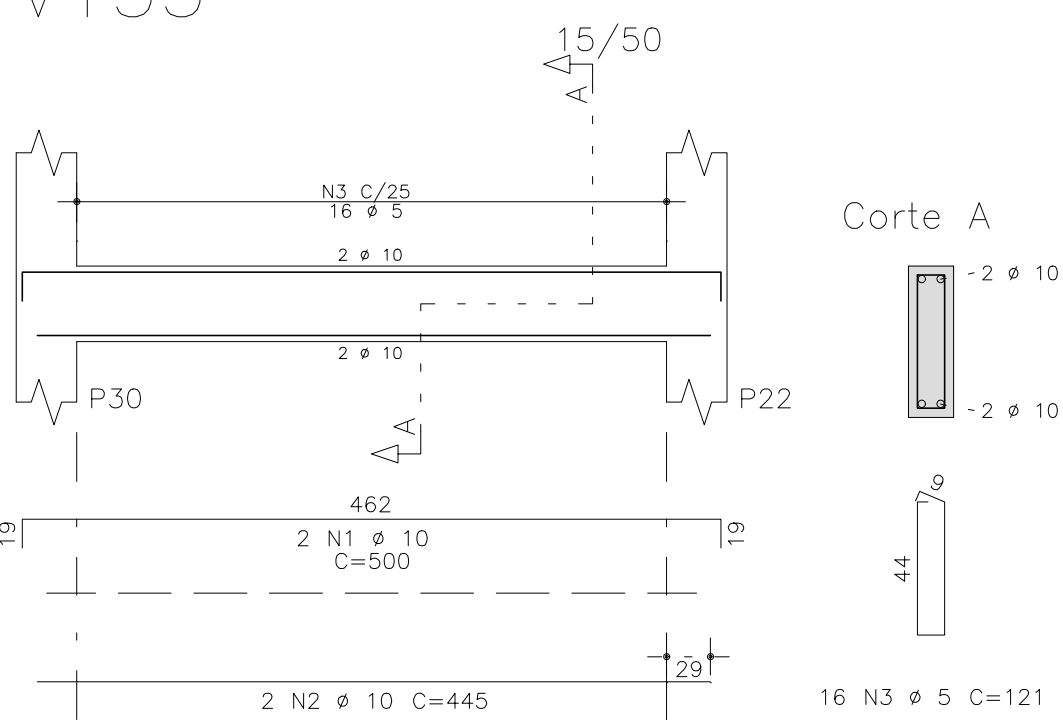
V134



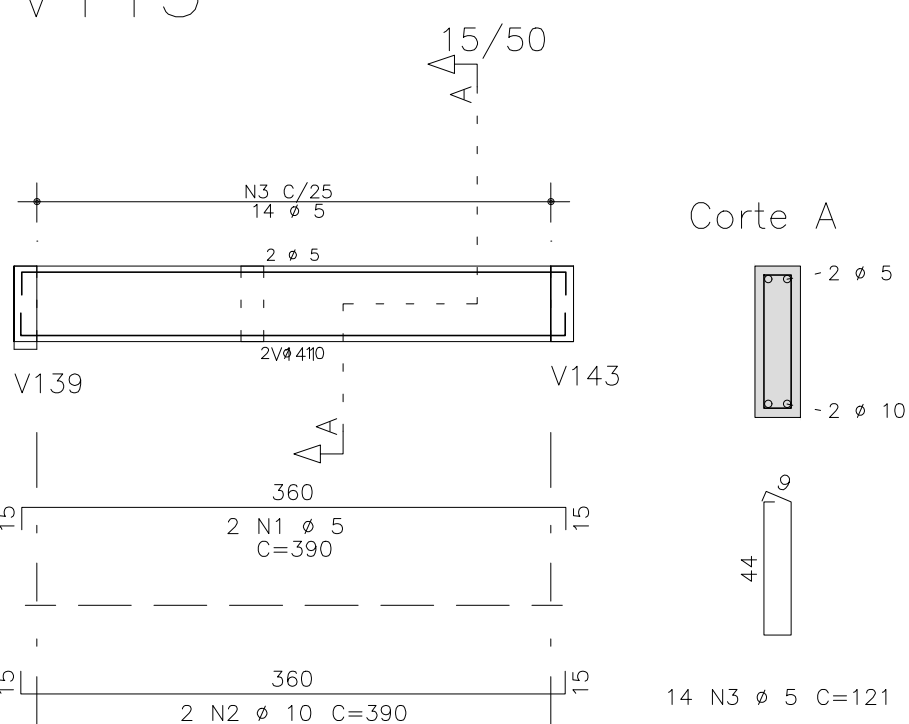
V127



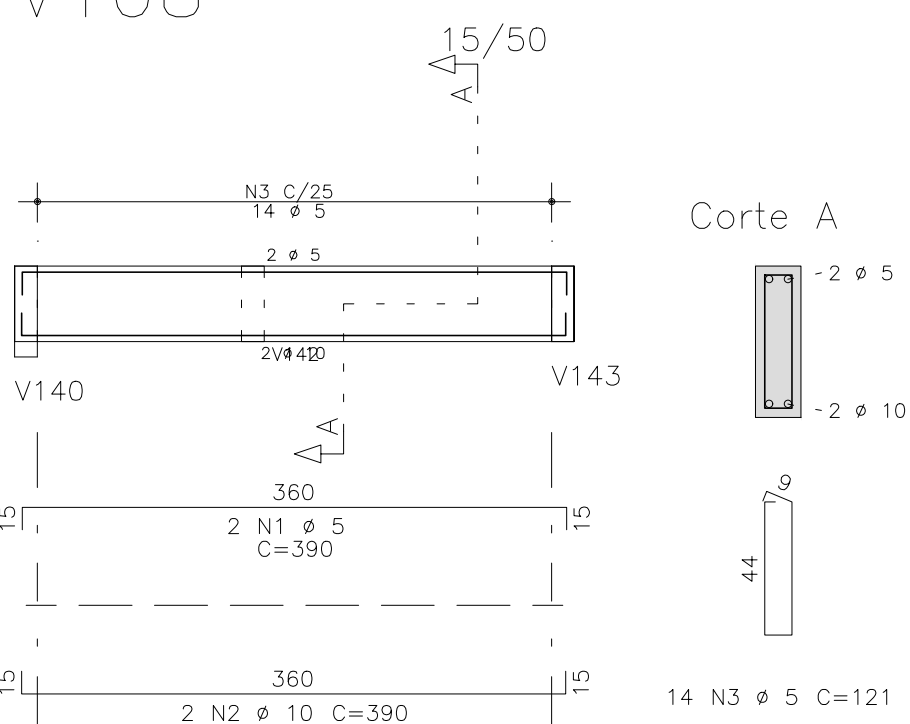
V133



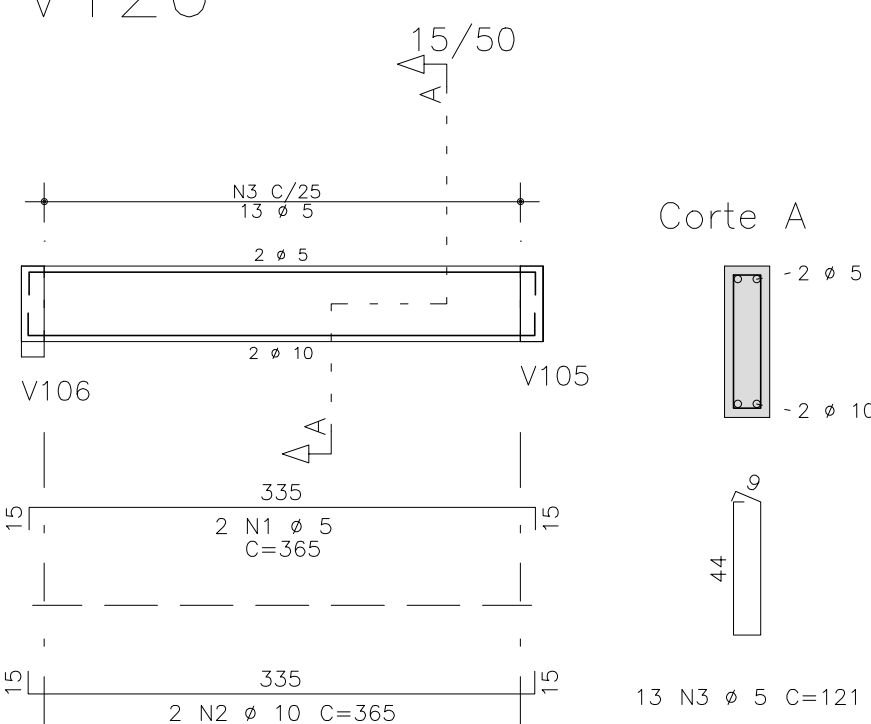
V115



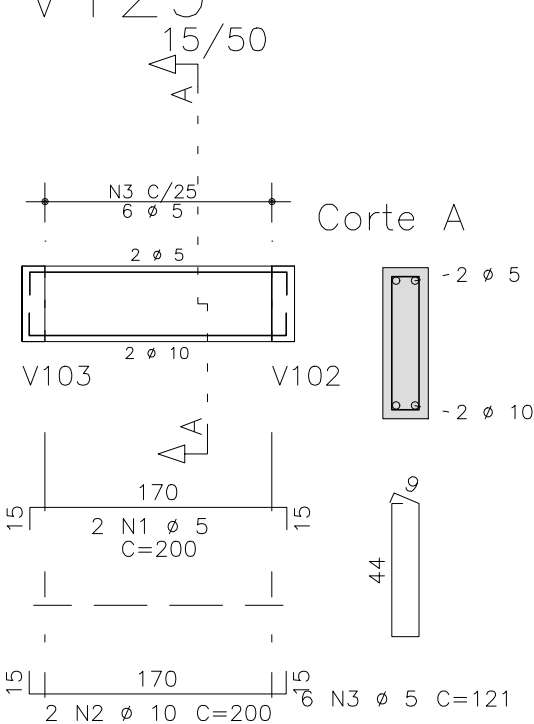
V108



V126



V129



AÇO	POS	BIT (mm)	QUANT	COMPRIMENTO	
				UNIT (cm)	TOTAL (cm)
60B	1	5	2	240	480
50A	2	10	4	200	800
50A	3	10	2	550	1100
50A	4	10	1	140	140
50A	5	6,3	2	270	540
50A	6	10	2	185	370
50A	7	12,5	5	225	1125
50A	8	10	1	745	1490
50A	9	10	1	205	205
50A	10	10	2	580	1160
50A	11	5	2	275	550
60B	12	5	48	121	5808
50A	13	6,3	3	122	366

60B	1	5	2	225	450
50A	2	10	3	200	600
50A	3	10	2	325	650
50A	4	10	1	145	145
60B	5	5	2	260	520
50A	6	12,5	2	345	690
50A	7	12,5	1	175	175
50A	8	10	4	215	860
50A	9	10	2	505	1010
50A	10	10	1	215	215
50A	11	10	2	230	460
50A	12	12,5	2	580	1160
60B	13	5	49	141	6909
50A	14	6,3	6	503	3018
50A	15	6,3	6	238	1428
50A	16	6,3	6	566	3396

60B	1	5	2	390	780
50A	2	10	2	390	780
60B	3	5	14	121	1694

60B	1	5	2	330	660
50A	2	10	6	170	1020
50A	3	10	2	565	1130
50A	4	10	2	305	610
60B	5	5	21	121	2541

60B	1	5	2	330	660
50A	2	10	6	170	1020
50A	3	12,5	2	575	1150
50A	4	12,5	1	245	245
60B	5	5	21	121	2541

60B	1	5	2	390	780
50A	2	10	2	390	780
60B	3	5	14	121	1694

50A	1	6,3	2	280	560
50A	2	10	6	220	1320
50A	3	10	6	1210	7260
60B	4	5	22	131	2882
50A	5	6,3	8	132	1056

60B	1	5	2	220	440
50A	2	10	2	170	340
50A	3	10	2	180	360
50A	4	10	2	469	938
60B	5	5	17	121	2057

60B	1	5	2	365	730
50A	2	10	2	365	730
60B	3	5	13	121	1573

50A	1	10	2	505	1010
50A	2	10	2	445	890
60B	3	5	14	121	1694

60B	1	5	2	490	980
50A	2	12,5	2	500	1000
50A	3	12,5	1	310	310
50A	4	6,3	4	81	324
60B	5	5	18	121	2178

60B	1	5	2	200	400
50A	2	10	2	200	400
60B	3	5	6	121	726

50A	1	10	2	500	1000
50A	2	10	2	445	890
60B	3	5	16	121	1936

50A	1	10	2	275	550
50A	2	10	2	175	350
50A	3	12,5	3	295	885
50A	4	10	2	445	890
50A	5	10	2	220	440
60B	6	5	16	121	1936
50A	7	6,3	4	122	488

RESUMO AÇO CA 50-60				
AÇO	BIT (mm)	COMPR (m)	PESO (kg)	
60B	5	460	71	
50A	6,3	138	34	
50A	10	275	170	
50A	12,5	74	71	
Peso Total		60B =	71 kg	
Peso Total		50A =	275 kg	

O acesso ao Modelo Estrutural em  
dimensão pode ser executado pelo QR CODE  
ao lado, podendo acessar via celulares,  
tablets e quaisquer outros dispositivos.



<b>Schuring &amp; Schuring</b>		<b>Schuring &amp; Schuring Ltda.</b>	
Schuring & Schuring		Escritório Técnico B.E.SCHURING - Projetos de Engenharia Av. XV de Novembro, 489 - Porto 2o. Andar - Cuiabá MT Fone:(065) 321 9959 - Fax:(065) 623 5066 - Email - schuring@terra.com.br	
PROJETO:	PROPRIETÁRIO:	OBRA:	
PREFEITURA MUNICIPAL VARZEA GRANDE MT	PREFEITURA MUNICIPAL VARZEA GRANDE MT	PREFEITURA MUNICIPAL DE VARZEA GRANDE MT	
RESP. TEC. EXECUÇÃO:	Unid. Básica de Saúde UBS-MATILDE CURVO DE MORAES		
AUTORES DO PROJETO:		ASSUNTO:	
Benedito Eliseu Schuring Eng. Civil - CREA 715/D-MT		BALDRAME DET ARM VIGA	
André Luiz Schuring Eng. Civil - CREA 8697/D-MT		PECAS DETALHADAS V104 / V106 / V108 / V109 / V111 / V115 V117 / V123 / V126 / V127 / V128 / V129 V133 / V134 / V140	
ESCALA:	DIREITOS AUTORES RESERVADOS VERIFICAR MEDIDAS NA OBRA	DATA:	FOLHA No.
1:50	ARQUIVO:	15/07/2019	17